

State of Wyoming Corner Record

(In compliance with the *CORNER PERPETUATION AND FILING ACT*, Wyoming Statutes, 1977, Section 36-11-101, et. seq., and the Rules and Regulations of the Board of Registration for Professional Engineers and Professional Land Surveyors)

Reverse side of this form may be used if more space is needed.

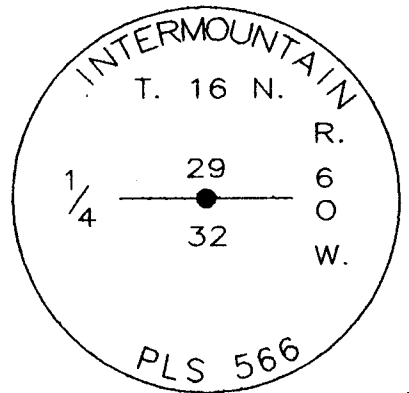
Record of original survey and citation of source of historical information (if corner is lost or obliterated). Description of corner monumentation evidence found and/or monument and accessories established to perpetuate the location of this corner. Sketch of relative location of monument, accessories, and reference points with course and distance to adjacent corner(s) (if determined in this survey). Method and rationale for reestablishment of lost or obliterated corner.

Found Witness Corner 40' South
no other evidence found.

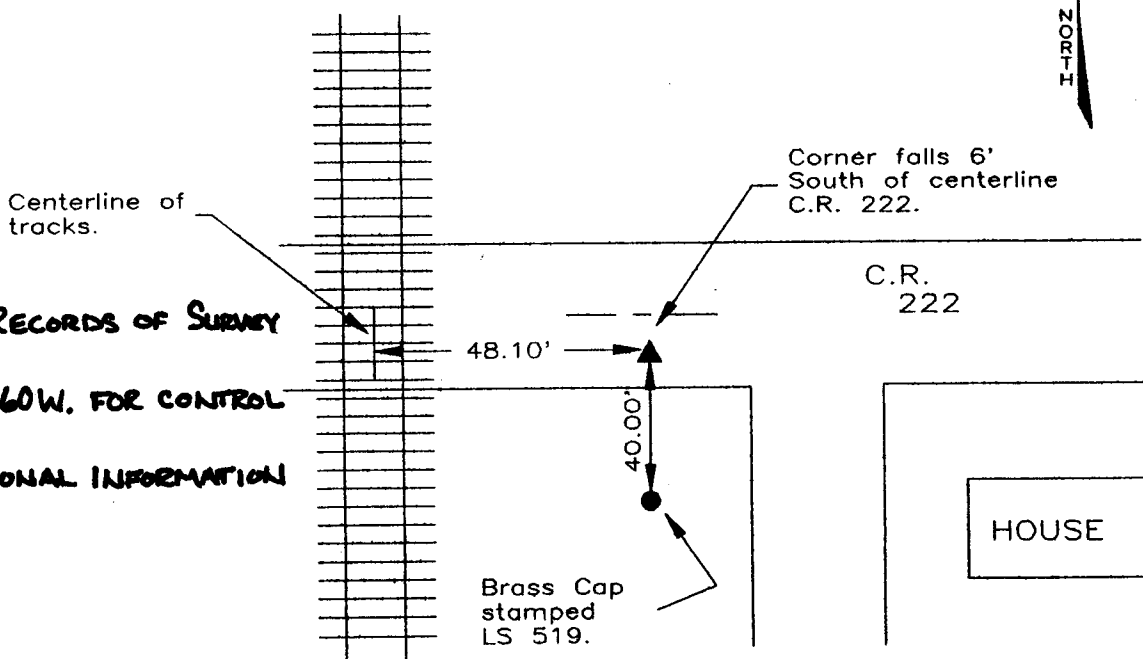
Set 3 1/4" aluminum cap
on #5 rebar 24" long.
Cap sets 6" below road surface.

Reference points used as shown.

GLO Record: Sandstone
(18" x 10" x 4")



LARAMIE COUNTY CLERK
 CHEYENNE, WY.
 '95 JUN 16 PM 3 17
 163818



NOTE: SEE RECORDS OF SURVEY

SEC 32, T. 16 N., R. 60 W. FOR CONTROL

USED AND ADDITIONAL INFORMATION

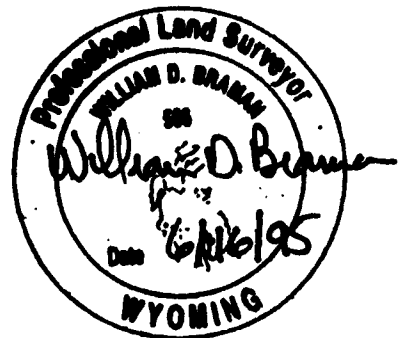
Date of Field Work: 06/29/94 Office Reference: 2747

CROSS INDEX DIAGRAM

	1	2	3	4	5	6	7	8	9	10	11	12	13	14	15	16	17	18	19	20	21	22	23	24	25
A																									
B																									
C																									
D																									
E																									
F																									
G																									
H																									
I																									
J																									
K																									
L																									
M																									
N																									
O																									
P																									
Q																									
R																									
S																									
T																									
U																									
V																									
W																									
X																									
Y																									
Z																									

Firm/Agency, Address
INTERMOUNTAIN PROFESSIONAL SERVICES, INC.
 5801 OSAGE AVENUE
 CHEYENNE WY 82001
 Telephone Number: (307) 632-3138

This corner record was prepared by me or under my direction and supervision.
SEAL & SIGNATURE



Corner Name: 1/4 CORNER Section: 29,32 T. 16 R. 60; 6th P.M. Cross-Index No.: V-7